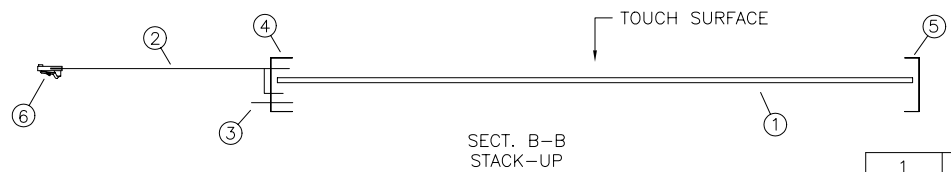
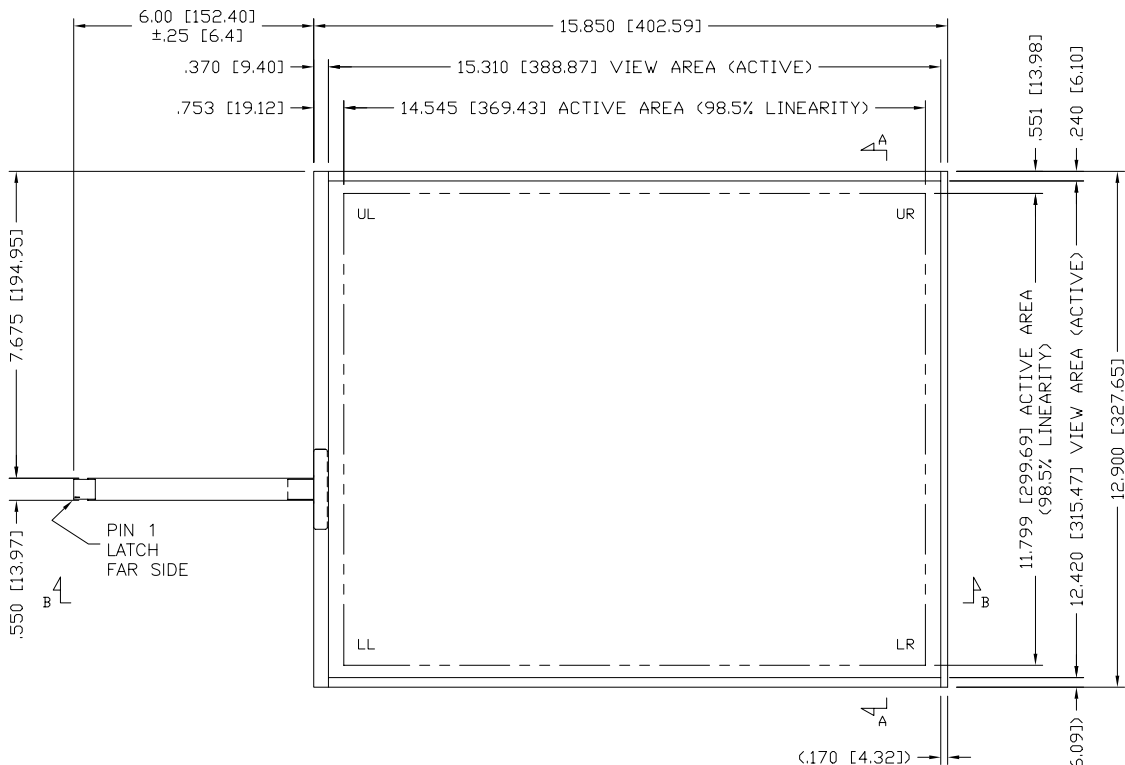


REV	DESCRIPTION	ECD #	DFT	CHK	ENG	DATE
-----	-------------	-------	-----	-----	-----	------



PINOUT	
PIN	DESCRIP
5	UR
4	UL
3	SHIELD
2	LL
1	LR

QTY	ITEM NO	PART NUMBER	DESCRIPTION
1	6	2500108	CONNECTOR
26.0	5	8200110	KAPTON TAPE, .25 (ISOLATION)
89.5	4	8200100	KAPTON TAPE, .50 (ISOLATION)
1	3	7600102	TAIL STRAIN RELIEF
1	2	7900255	TAIL SUBASSY
1	1	4000241	BOTTOM SUBASSY .125 THK

- NOTES:
- TOTAL THICKNESS: .131 [3.33] ±10% (.141 [3.58] @ TAIL INTERCONNECT AREA)
 - FLEXTAIL: DO NOT BEND TO LESS THAN 1/8" RADIUS
 - LABEL: SERIAL NUMBER & PART NUMBER / REV. (FAR SIDE OF TAIL)
 - CONNECTOR: 5 POS, .10 PITCH, LATCH, AMP 487526-4
 - VLT @83% OR GREATER
 - OPERATING TEMP: -20°C TO +70°C, 5% TO 90% RH
 - STORAGE TEMP: -50°C TO +85°C, <35% RH
 - 1/2 WAVE BACK COATED W/ BACK EMI BUSBAR
 - ETCH FINISH: AGO

DO NOT SCALE DRAWING !
 UNLESS OTHERWISE SPECIFIED, DIMENSIONS ARE IN INCHES. REMOVE ALL BURRS AND BREAK SHARP EDGES.
 DEC. TOLERANCE:
 .XX = ±.060 UNO FRAC. TOL. x/x = ±1/16
 .XXX = ±.050 UNO
 .XXXX = ±.030 UNO ANGULAR TOL. = ±1°
 .XXXXX = ±.008 UNO

NOTICE OF PROPRIETARY RIGHTS
 THIS DOCUMENT, AND THE INFORMATION IT CONTAINS, IS PROPRIETARY TO TOUCH INTERNATIONAL. IT MUST NOT BE DUPLICATED, OR ITS CONTENTS USED OR DISCLOSED (IN WHOLE OR IN PART) WITHOUT WRITTEN PERMISSION FROM TOUCH INTERNATIONAL.

TOUCH INTERNATIONAL
 2222 West Rundberg Ln #100
 Austin, Texas 78758
 512-832-8292

TITLE:
SENSOR CAP 5W 19.0 DIAG
1/2 WAVE BACK COAT

DRAWN DATE R. Johnson 3/06	SCALE: NTS	SIZE A	DWG. NO. 59-190FA-012	REV. 2.0
-------------------------------	------------	-----------	--------------------------	-------------